



PartMaster Level 3 Milling

**ONLY
£695!**
Start

PartMaster Level 3 - The classic interface for the advanced user.

All the power and functionality you need to produce programs that need that extra level of sophistication. Combined with the ease of use that companies throughout the world have chosen.

PartMaster Level 3 builds on the features found in Levels 1 and 2, and includes a range of advanced cutting strategies that allow more complex parts to be cut, for example :-

Contouring

Advanced Ramping - Angled, Zigzag, Arc, Approach moves, 1st span and whole contour. Partial machining to avoid clamps etc. Combine multiple contours, Angled wall machining, Z profiling, Set plunge position.

Area Clear

Pre-drilling, Angled ramping, Zigzag ramping, Spiral ramping, Set plunge position, Angled wall machining.

Shape Merge

Define two separate contours at differing Z depths and create a ruled surface between them, constant Z level or full 3 axis machining.

Z Profiling

Single Slot, Ruled surfaces - Extrusion and Rotation, Surface of revolution and surface patch between 2 profiles.

Chamfering

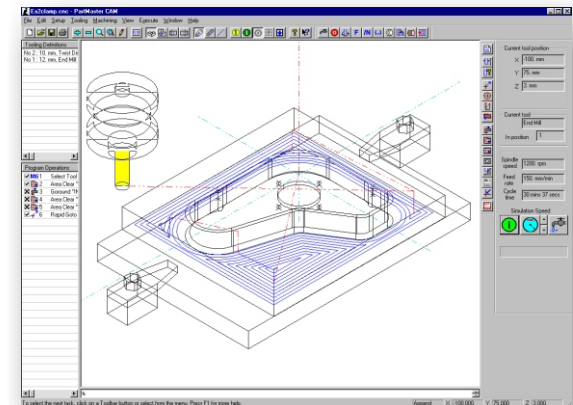
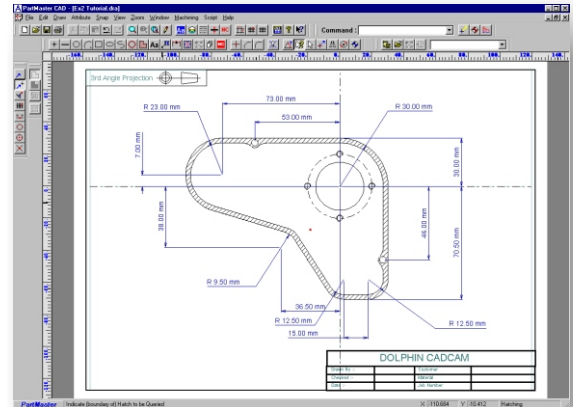
Automatically produces single or multiple cuts depending on tool size.

Thread Milling

For internal and external threads using single and multi-point tools

Digitising

Free hand milling and drilling - ideal for backing-off extrusion dies



Macros

Create custom Visual Basic Scripts (VBS) to automate repetitive work and produce family of parts.

Tooling Database

Create multiple tooling databases and machine tool setups.

Fixture offsetting

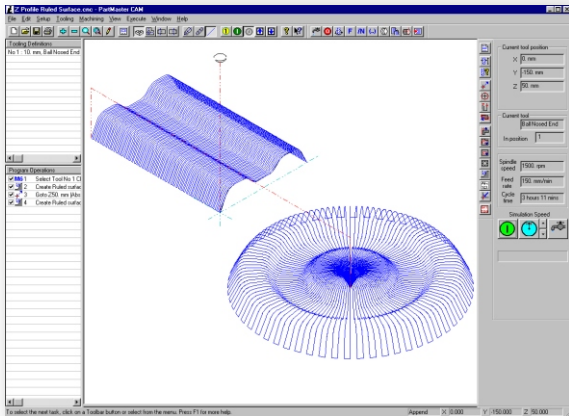
Create multiple machining locations using G54, G55 etc.. offsets.

Visit our website to watch a movie showing how simply and quickly you can get your machine tool cutting metal www.dolphin.gb.com

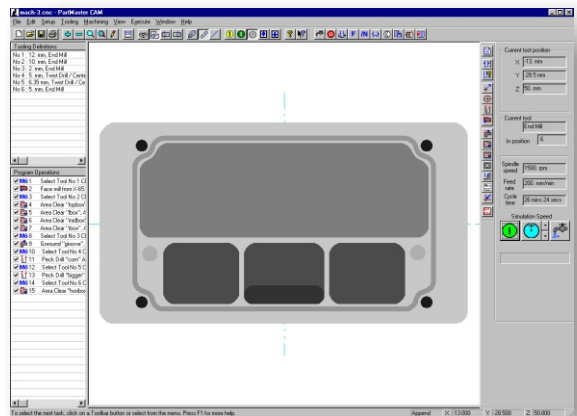
The Engineers' CAD/CAM Solution



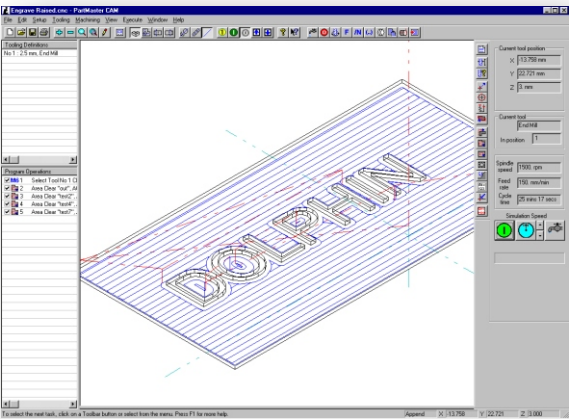
PartMaster Level 3 Milling



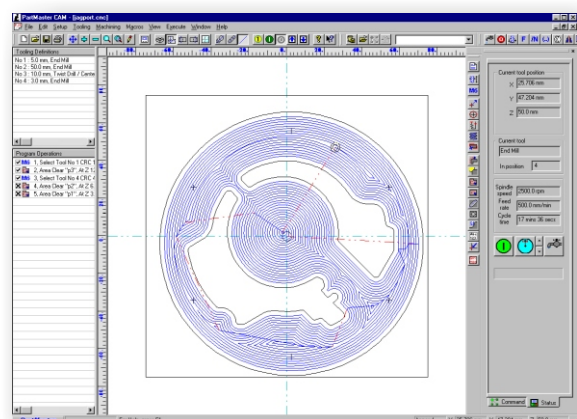
Z profile machining with Linear or Radial extrusion options.



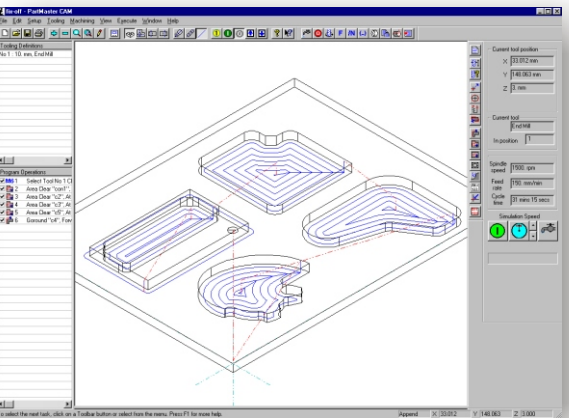
Shaded toolpath allows different depths to be seen clearly.



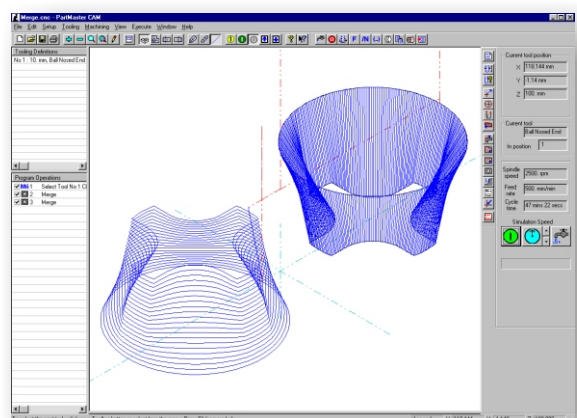
Using True-Type fonts, text can be left 'raised' as islands or machined 'into' the workpiece.



Advanced area clearance with unlimited islands, many machining and plunging options.



Machining multiple components in a single setup using the 'Fixture Offset' facility.



The Merge command allows a ruled surface to be machined from two separate Contours.

Dolphin Cadcam Systems Ltd
7 South Dean Road
Kilmarnock. KA3 7RE UK.

CADD T.net
Australian Distributor
web: <http://www.caddit.net>
cad@caddit.net

The Engineers' CAD/CAM Solution